

# Villa & Vision

THE NEW GOLDEN AGE



*Volkswagen based motor caravans by Richard Holdsworth*

[www.vwT4camper.info](http://www.vwT4camper.info) - a useful website for owners and enthusiasts of VW T4 Transporter Campervans

**F**OR a decade Richard Holdsworth's VILLA motor caravan has led the field in terms of 'user friendliness' with features such as the German rock-and-roll mechanism that turned a comfortable rear bench seat into an even more comfortable bed in the twinkling of an eye.

New Villa has the same comfort – but twice the safety thanks to a superb piece of engineering in the form of a rear seat with solid steel framework bolted firmly to the floor and crash tested to give peace of mind to all passengers – whether front or rear.

At night, the seat slides forwards while the backrest drops neatly into place in one simple action to make the new VILLA a joy to use when day turns to night.

New VILLA leads in other ways too. For example, the experienced motor caravanner will soon note that by using a top loading refrigerator Richard Holdsworth has created a layout in which both the refrigerator AND toilet can be accessed even with the bed in use.

### Greater Efficiency

The refrigerator itself is renowned for its greater efficiency (top loading fridges always retain the cold better) whether working from vehicle electrics, mains hook-up or camping gas. There's room for wine and milk bottles, a lift-out basket for perishables and ice trays for your end-of-day drink. This unique layout creates so much more storage space too.

Drawers for a setting of quality tableware (provided), cutlery and a mass of space for tinned foods, pots and pans and other essentials for long term motor caravanning. Beneath the rear seat is a cavernous slide-out drawer. There is a full length wardrobe and in the high top VILLA there's an enormous space for bedding in the rear roof compartment.

There's a roof rack and ladder for the high top VILLA while a small luggage rack is also fitted to the elevating roof.

### Your safety

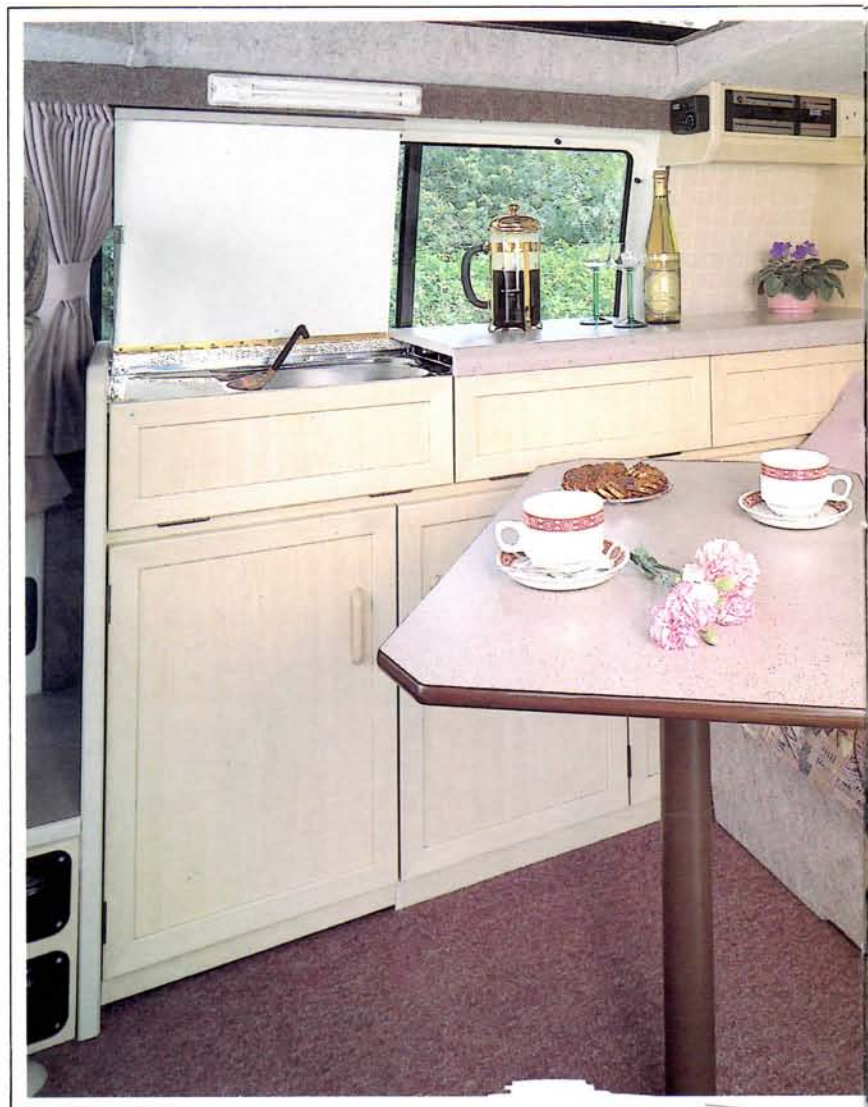
Returning again to the theme of safety, new VILLA is available with Firetrace™, a unique new fire extinguisher system which automatically operates within seconds of a fire breaking out in your van.

Firetrace™ works like this. A thin tube, pressurised with a special gas and designed to melt at a pre-determined temperature, is fixed behind the motor caravan's main units to act instantly if a fire should break out.

A boon 24 hours a day, when you're asleep, say, or when the vehicle is left unattended.

There are other features you will enjoy too. Mains hook-up, battery condition indicator and 220 volt socket for any domestic appliances you might like; portable TV, electric shaver or hair dryer. There's a built-in water level gauge for the 12 gallon under-floor water tank and, of course, the complete electrical system is protected by a proper ELCB safety 'trip'.

Add to this a superb three burner and grill cooker with flame failure device heater and you can see why the new VILLA is the best of both worlds – today and tomorrow.



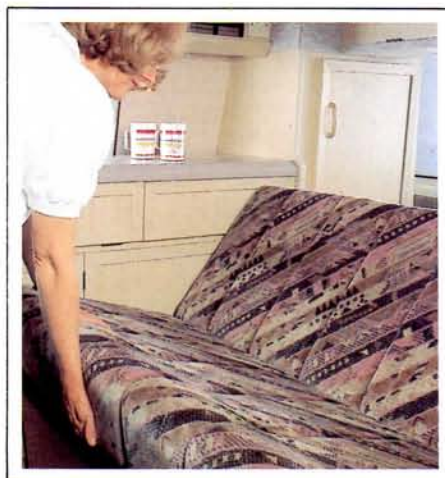
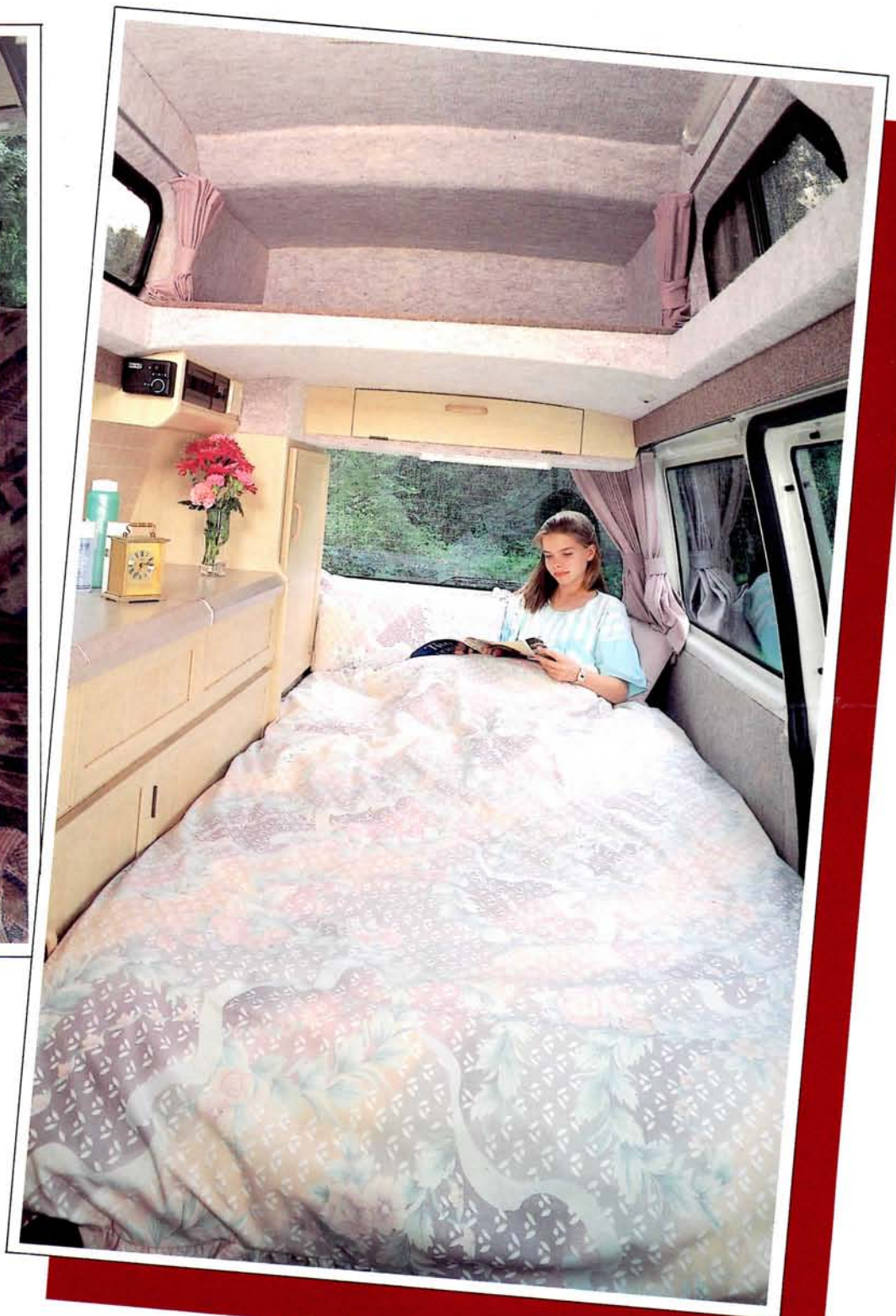
# Villa



*Above*  
Stretch your legs in comfort

*Right*  
Super size double bed

*Below right*  
Making the bed has never been easier...  
one simple action



**T**HE new Volkswagen Transporter is said to be the most technically advanced motor caravan base vehicle in the world today after an investment programme costing some \$700 million.

Drivers testify to its superb driving style which epitomises the very best in German engineering. The cab is beautifully laid out (note how the special motor caravan base vehicle has additional fresh air vents to the dashboard), there is a feel of solid quietness and passengers and drivers alike could be mistaken for thinking they are riding in a luxury car. Undoubtedly, the new Transporter is ahead of its time, by any time scale.

The new Villa and Vision conversions, too, are researched, designed and tested not only for today but also for years to come. Genuinely motor caravans for the next century.

Apart from an intensive crash testing programme for seats and lap belts, the Villa and Vision have such safety features as flame failure devices on all gas operated appliances while the vehicle can be further protected with the unique Firetrace™ automatic fire extinguisher system which operates automatically – whether the occupants are in the vehicle or not.

There are other safety features too – such as refrigerators that are vented to the exterior well away from opening windows. An obvious point, you may think, but a close inspection of some other models soon reveals converters who do not share this concern for your safety.

All Richard Holdsworth motor caravans are built to the exacting standards of the SMMT Construction Code and Richard Holdsworth – as a Volkswagen UK recognised converter – bases the new Villa and Vision on the special motor caravan base vehicle built exclusively for the three top UK converters.

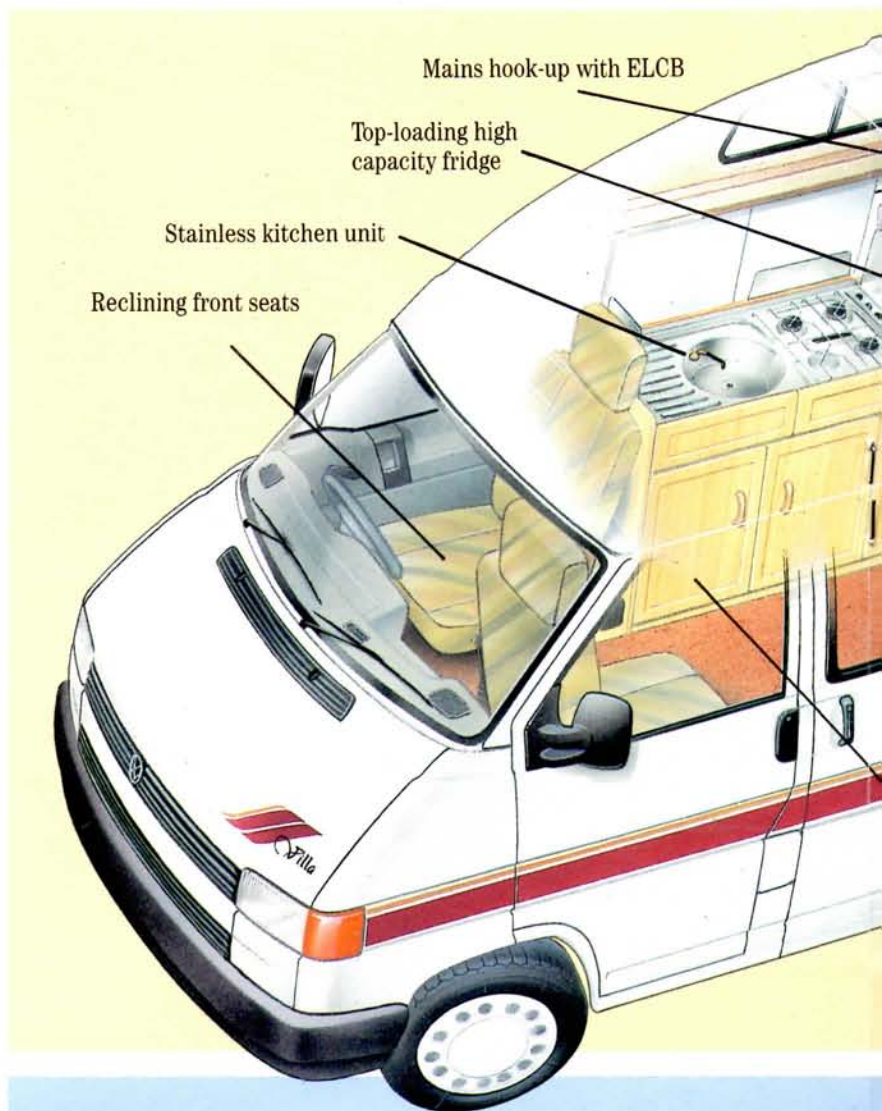
This close liaison with Volkswagen over two decades has culminated in the immense strengthening permitting the large roof apertures seen in the Villa and Vision – yet retaining the vehicle's integrity and its warranty. Note also that this special motor caravan base vehicle is fitted during production with 'bonded-in' windows giving strength, better aerodynamic airflow and superb appearance.

Other features include fresh air vents for the dashboard, heated rear window and rear wash/wipe.

Truly, the new Volkswagen Transporter plus Richard Holdsworth's Villa and Vision – motor caravans for the 21st century – here now.

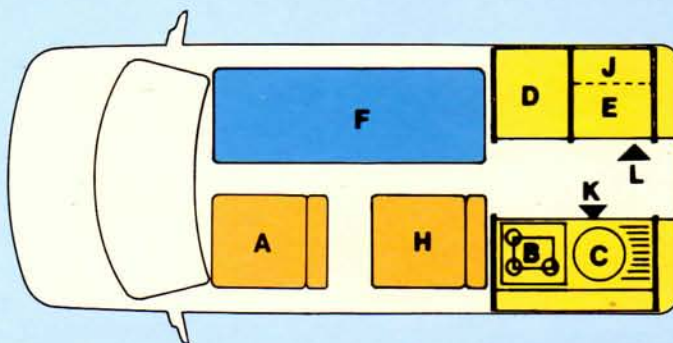


Part of our test programme for your peace of mind



## VISION

- |                   |                                      |
|-------------------|--------------------------------------|
| A Swivel Cab Seat | H Face-forward Seats with Restraints |
| B Cooker          | J Roof Cabinets                      |
| C Sink/Drainer    | K Slide-out Storage                  |
| D Wardrobe        | L Storage                            |
| E Fridge          |                                      |
| F Bed             |                                      |



Slide-out storage

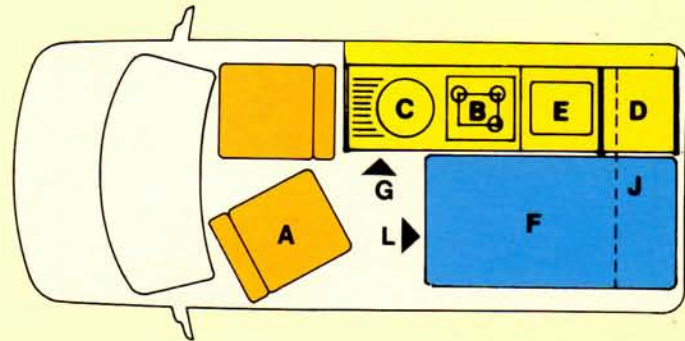


Roof-rack ladder



# VILLA

- |                   |                    |
|-------------------|--------------------|
| A Swivel Cab Seat | F Bed              |
| B Cooker          | G Slide-out Toilet |
| C Sink/Drainer    | J Roof Cabinets    |
| D Wardrobe        | L Storage          |
| E Fridge          |                    |



Slide-out toilet compartment

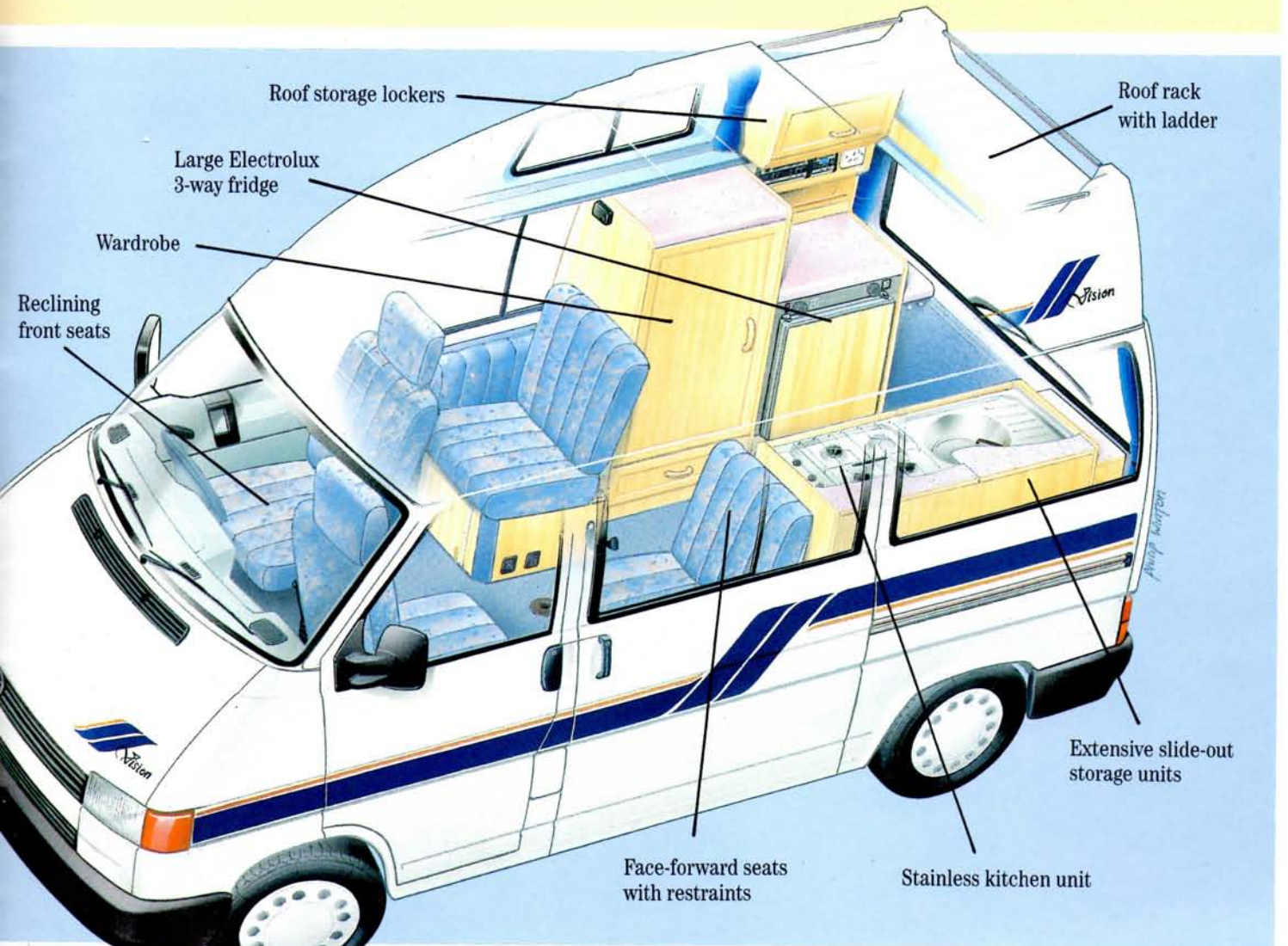
Unique single action pullout double bed



Top loading fridge



Pull-out toilet



Roof storage lockers

Roof rack with ladder

Large Electrolux 3-way fridge

Wardrobe

Reclining front seats

Extensive slide-out storage units

Face-forward seats with restraints

Stainless kitchen unit

**F**OR years motor caravanners have craved for a conventional, walk-through type layout on the world's number one motor caravan base vehicle and Richard Holdsworth – leaders in style and flair – are just the people to provide it.

The answer – the new VISION. With standing height from the rear doors right to the front windscreen, it is the most spacious Transporter based motor caravan ever.

Like the new VILLA, VISION has a strong leaning towards safety. There is the option of the unique Firetrace automatic fire extinguisher, the three burner and grill cooker is fitted with flame failure device and such items as cushion foams are fire retardant.

And – also like the new VILLA – the VISION is fitted with face-forwards seats and lap belts that have come through an intensive crash testing programme with flying colours. It all adds up to a superb motor caravan that you really can put your trust in.

### More space

New VISION has more space simply because of the giant roof aperture – an aperture (and the strengthening that goes with it) that has resulted from work over an 18 month period with Volkswagen engineers here and in Germany. One look at the space this brings and you soon realise the effort and expense is more than worth while.

There are exceptional storage facilities including a full length wardrobe, high top cupboards on either side and, a clever drop down shelf at the front for a whole host of bulky items such as sleeping bags, pillows, etc. Should you require additional berths, the padded shelf forms part of a roof bed with two further padded bed sections as optional extras.

At ground level you have the choice between single beds up to 6ft 6in long or a giant double – at no extra cost.

### All new kitchen

Beneath the modern, stainless steel kitchen unit is an extensive array of storage including wipe-clean drawers, racks and wire baskets for crockery, cutlery and tinned food. There is another slide-out rack exclusively for bottles while the latest Electrolux 212E three-way refrigerator – with automatic ignition – has a door moulding for bottles plus freezer compartment.

Of course, new VISION has a mains hook-up and a sophisticated control panel for your electrics including battery condition indicator, 220 volt plug and a water level gauge for the under-floor tank.

New VISION has a style and flair that would do justice to the very best design houses of Europe – just take a look at the graceful contours of the fibreglass high top with built-in roof rack and ladder. Then there's the modern exterior graphics and Richard Holdsworth's standard of quality for the interior – many would say the best ever.

The new Vision from Richard Holdsworth – the most spacious Transporter based motor caravan ever.



*VISION*



*Above  
Relax... with room to spare*

*Above right  
Dining out... Holdsworth style*

*Right  
Room to stretch in the roomy single beds*

*Below right  
No lack of facilities in this kitchen*

*Below left  
Large Electrolux 212E fridge*



# Specification:

New Villa and Vision are available with a choice of four engines – two petrol (one with catalytic converter) and two diesel engines. All are front mounted, transverse and drive through five speed gearboxes. Standard specification is a 2 litre 84bhp petrol engine. Full details are as follows:

## Overall Dimensions

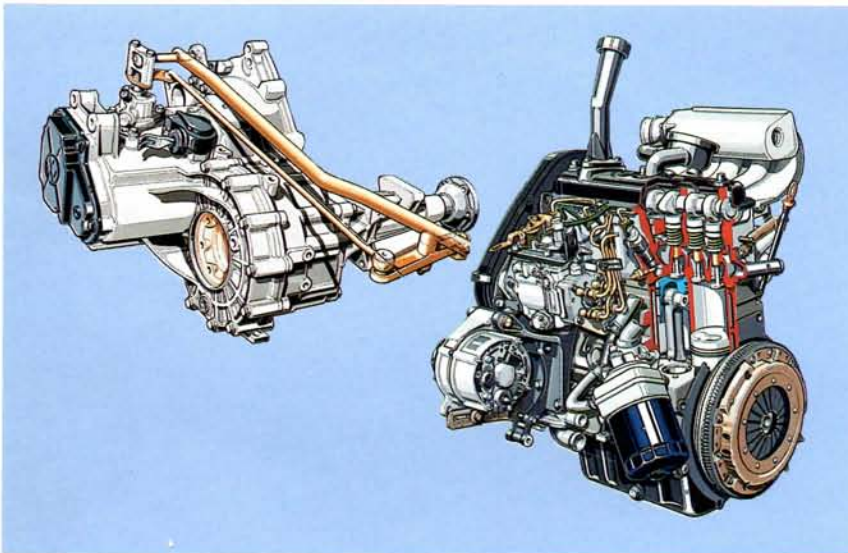
### Vision/ Villa Hightop

Length: 4.75m (15'8")  
 Width (inc.mirrors): 2.16m (7'1")  
 Height: 2.52m (8'3½")

### Villa Elevating Roof

Length: 4.66m (15'3")  
 Width (inc.mirrors): 2.16m (7'1")  
 Height: 2.22m (7'3")

	Petrol	Petrol Cat.	Diesel	Diesel
Type	Volkswagen. Front mounted, transverse water cooled 4 cylinder, in-line	Volkswagen. Front mounted, transverse water cooled 4 cylinder, in-line	Volkswagen. Front mounted, transverse water cooled 4 cylinder, in-line	Volkswagen. Front mounted, transverse water cooled 5 cylinder, in-line
Capacity cc	1968	1968	1896	2370
Max. power @ rpm	62KW (84bhp) @ 4300	62KW (84bhp) @ 4300	45KW (61bhp) @ 3700	57KW (78bhp) @ 3700
Max. torque @ rpm	159Nm @ 2200	159Nm @ 2200	127Nm @ 1700-2500	164Nm @ 1800-2200
Rating	ECE 15/04-88/436 EWG	ECE 15/04-88/436 EWG	ECE 15/04-88/436 EWG	ECE 15/04-88/436 EWG
Bore and stroke	81.0 × 95.5mm	81.0 × 95.5mm	79.5 × 95.5mm	79.5 × 95.5mm
Compression ratio	8.5:1	8.5:1	22.5:1	22.5:1
Fuel system	Electronically controlled fuel injection. Regular or unleaded petrol.	Electronically controlled fuel injection. Emission control via 3 way catalytic converter – unleaded petrol only	Indirect injection diesel with swirl chambers	Indirect injection diesel with swirl chambers



### Service

- Initial 1,000 mile service on diesel engines.
- Lubrication service every 5,000 miles (Diesel).
- Lubrication service every 10,000 miles (Petrol).
- Major service every 20,000 miles (or annual inspection).

### Warranty

- 12 months, unlimited mileage (mechanical and paintwork).
- Additional 12 or 24 month warranty optional.
- 6 year anti-perforation.

### Steering

- Maintenance free rack and pinion steering.
- Collapsible steering column.
- Power assisted steering standard with diesel engines.

### Brakes

- Dual circuit hydraulic split front/rear with servo assistance.
- Front disc brakes.
- Rear drum brakes.

### Mechanical

#### Suspension and Running gear

- Independent front suspension with torsion bars, upper and lower wishbones.
- Independent rear suspension with mini coil springs, semi trailing arms.
- Telescopic, double acting shock absorbers.

Design registered and patented.

The policy of V.A.G. (United Kingdom) Limited and Richard Holdsworth Conversions Ltd. is one of continuous improvement. The right to change prices, specifications or equipment at any time without notice is reserved. In addition, all descriptions, data and information given in this brochure is subject to production variations. All dimensions and other technical information are approximate only and may vary according to model.

Vehicles and conversions featured in this brochure may be fitted with optional extras available at extra cost. Please see your dealer for the full list of optional extras.

This brochure supercedes and replaces all previous brochures.

Sept 1991



Headley Road East Woodley, Nr. Reading Berks. ENGLAND  
 Tel: (0734) 692900 or 693731 Fax: (0734) 442138

[www.vwT4camper.info](http://www.vwT4camper.info) - a useful website for owners and enthusiasts of VW T4 Transporter Campervans

Built to the strict code of practice of the Motor Caravan Section of the SMMT.

