

Villa XL Vision

Volkswagen based Motor Caravans by Richard Holdsworth

Have you noticed how the words 'quality', 'workmanship' and 'excellence' seem to fill the sales brochures of just about every motor caravan builder in Britain to day?

It's the same for those producing coachbuilts or van conversions. From the largest to the smallest.

But at Richard Holdsworth Conversions the pride in our work goes very much deeper than simply filling our adverts or brochures with fine words.

At the Richard Holdsworth factory in Woodley we believe that innovative design, practical features and safety play an equal part in our motor caravans.



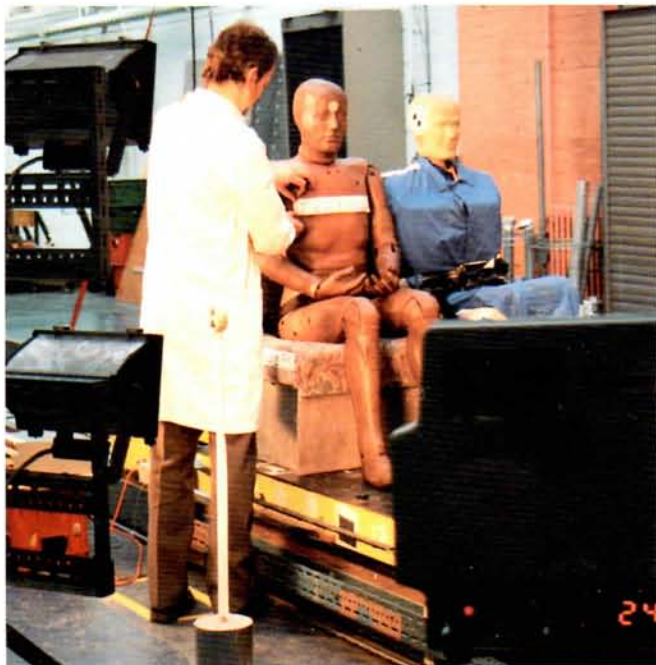
Quality that's more than s

Safety all the way

Take safety for example. Was it not Richard Holdsworth Conversions who were the first (and at the time of writing, the only) motor caravan builder in the UK who crash tested his seats and lap belts in his Volkswagen motor caravans? Now there are three-point, inertia reel belts for all rear, face-forwards seats in the Villa and Vision – and all of them meeting the very latest international legislation years before the lawmakers say it is necessary.

And was it not Richard Holdsworth who pioneered the automatic fire extinguisher as an option in motor caravans? And worked with Tyron to demonstrate the value of the safety tyre band to minimise the effects of a tyre blowing out at speed.

If we may say so, these are all very sensible measures that go a lot deeper than just putting the words 'Quality', 'Workmanship' and 'Excellence' in our sales brochures.



The ultimate award

Not that Richard Holdsworth only makes motor caravans that have an emphasis on safety.

There are tons of practical features that you will really value when you use your Richard Holdsworth motor caravan. Like three burner and grill cookers (not just two), models with a choice of single or double beds and genuine Formica worktops for the very best in practicality.

It's for these reasons that Richard Holdsworth have won no less than four 'Motor Caravan of the Year' awards – the ultimate pat on the back.

The ultimate quality standard

There's something else that helps Richard Holdsworth attain real quality time after time – and that's BS 5750. Richard Holdsworth Conversions were the very first to achieve BS 5750 for a unified van conversion, coachbuilt and mini bus manufacturing operation in Britain – another indication of the Company's determination to build quality that's a lot deeper than skin deep.





kin deep...

And then there's training. Richard Holdsworth won the 1991/92 award for the best trained company in the high-tech Thames Valley area. And when one considers that the very best computer and defence equipment companies operate from the Thames Valley – then one realises that Richard Holdsworth Conversions can match almost anyone.

Safety. Practicality. And trained workforce. Now that's what Richard Holdsworth Conversions mean by real quality, workmanship and excellence.



For three decades Richard Holdsworth's Volkswagen based motor caravans have led the field in terms of comfort, convenience and safety – 'user friendly' is probably the best way to describe them.

Features such as the German rock and roll mechanism that turned a comfortable rear bench seat into an even more comfortable double bed in the twinkling of an eye have been typical winning features.

Villa XL builds on these successes to be better in terms of comfort and convenience – and much, much better in terms of safety.

Take that rear bench seat. Now it has a solid steel framework bolted

firmly to the floor and – along with the three-point inertia reel seat belts – has been crash tested in the ultimate examination devised by the most critical testing authorities in the world.

And the result? Villa and Vision XL meet the strictest European standards for cars years before European law makers require it to be done.

It's typical of Richard Holdsworth that he should be the first to set the standards for others to follow because the Company's whole policy is to build better and build safer.

But Villa XL is not just a safer van. It's a van packed with practical

features too. As we said at the beginning, the Villa XL is a thoroughly 'user friendly' motor caravan.

For example, note how you can gain access to the cavernous locker beneath the rear seat even when it's made up as a bed.

During daytime the roller type fly screens fitted to the three main caravan windows provide a degree of privacy as well as keeping out unwanted pests.

Curtains are lined and you only have to feel the headlining once to see how deep and thorough the insulation is.

There are ample storage cupboards for extended touring. There's

A traditional layout... with the lat



Single action bed with storage space underneath



Pull-out toilet



No lack of facilities in this kitchen

drawers for quality tableware (provided), cutlery and a mass of space for tinned food, pots and pans while the open area at the rear of the high top and beneath the rear bed area gobble up bulky items with ease.

There are other features that you will enjoy too. Mains hook-up, battery condition indicator and 220 volt socket for any domestic appliances you may like; portable TV, electric shaver or hair drier. There's a built-in water level gauge for the underfloor water tank and, of course, a chemical toilet is fitted as standard.

While others fit a two burner cooker – Villa XL has three (there's that 'user friendliness' again) while

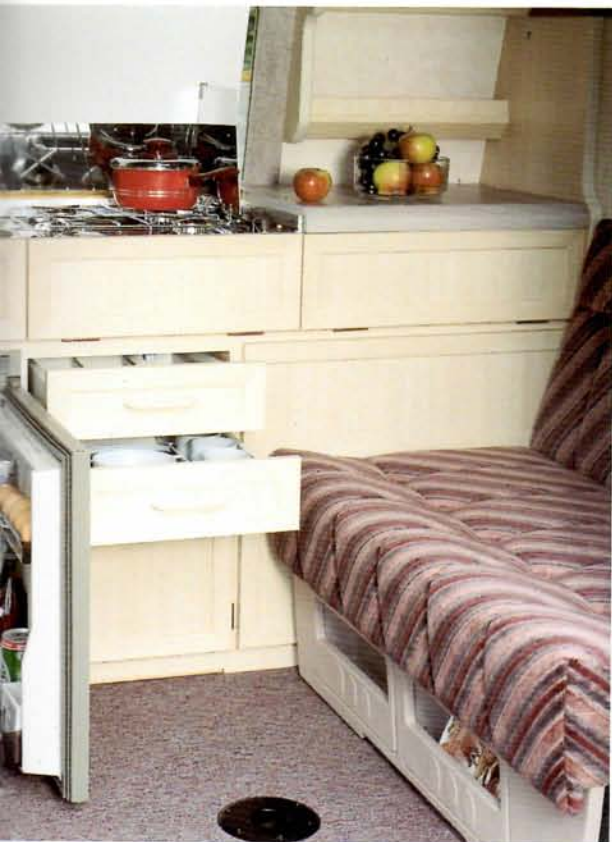
the complete unit is the latest 'one piece' unit in stainless steel for ease of maintenance and cleaning.

No wonder the Villa XL is exported so freely to Japan and Germany – the two most demanding markets in the world.



Villa XL

test features



Space saving fitted drawers



Secure storage at rear



Super size double bed



For years motor caravanners have craved for a conventional, walk-through type layout on the world's number one motor caravan base vehicle and Richard Holdsworth – leaders in style and flair – are just the people to provide it.

The answer – the new Vision XL. With standing height from the rear doors right to the front windscreen, it is the most spacious Transporter based motor caravan ever.

Like the new Villa XL, Vision XL has a strong leaning towards safety. There is the option of the unique Firetrace automatic fire extinguisher, the kitchen unit is fitted with flame failure device as are all the other gas appliances

while the electrical system is protected by an ELCB safety 'trip'.

And also like the new Villa XL – the Vision XL has a face-forwards seat that has come through an intensive crash testing programme with flying colours. And Vision XL also shares with the Villa XL the distinction of being the first UK built Volkswagen motor caravan to have a three-point inertia reel seat belt that actually complies with EC regulations for cars!

More space

New Vision XL has more space simply because of the giant roof aperture – an aperture (and the strengthening that goes with it) that has resulted from work over an 18 month period with Volkswagen

engineers here and in Germany.

There are exceptional storage facilities including a full length wardrobe, high top cupboards on either side and at the front – over the drivers cab. On the outside you will see the high top roof rack for bulky items and a natty ladder to get to it.

Back inside you have a long bench seat on the offside and the unique, crash tested face-forwards seat with its inertia reel belt on the nearside – just inside the vehicle doorway.

Both have excellent storage space beneath – and it's beneath the bench seat that you will find the chemical toilet, another plus point for the Vision XL.

The stylish hightop with walk-thro



Plenty of storage space



Face-forward rear seats fitted T.U.V. approved seat belts

At night, recline the cab seats and rearrange the cushions to make either a pair of single beds up to 6ft 6in long or a giant double, available at small extra cost.

Roller type fly screens are fitted to all three lower caravan windows.

Best kitchen

But many motor caravanners will say that the winning feature of the new Vision XL is the kitchen unit.

Certainly that's what the judges said at Earls Court when the leading motor caravans in Europe came together and Vision walked off with the Cramer 'Best Kitchen' award.

What makes it a winner? Well, the three burner and grill cooker for a

start and the array of wipe-clean drawers, food racks and wire baskets for crockery, cutlery and tinned food all helps. There's another slide-out rack exclusively for bottles to supplement the Electrolux 212E three-way refrigerator with its freezer compartment. And there's even a rack for tea towels.

Did we say Vision XL is the most spacious Transporter based motor caravan ever? And it's probably the best equipped too!!

ough layout

Vision XL



Comfortable single beds



Full size fridge



Relax - with room to spare



Also available from Richard Holdsworth - two exciting compact coachbuilds based on the Volkswagen SWB chassis-cab.

www.vwT4camper.info - a useful website for owners and enthusiasts of VW T4 Transporter Campervans

Specification:

The Villa XL is available with a choice of four engines – two petrol (with catalytic converter) and two diesels, one with catalytic converter. All are front mounted and drive through five speed gearboxes to the front wheels. Alternatively, automatic transmission is available with the 2.5 petrol engine and 2.4 diesel. A synchro 4 wheel drive is available with the 2.4 diesel.

Overall Dimensions

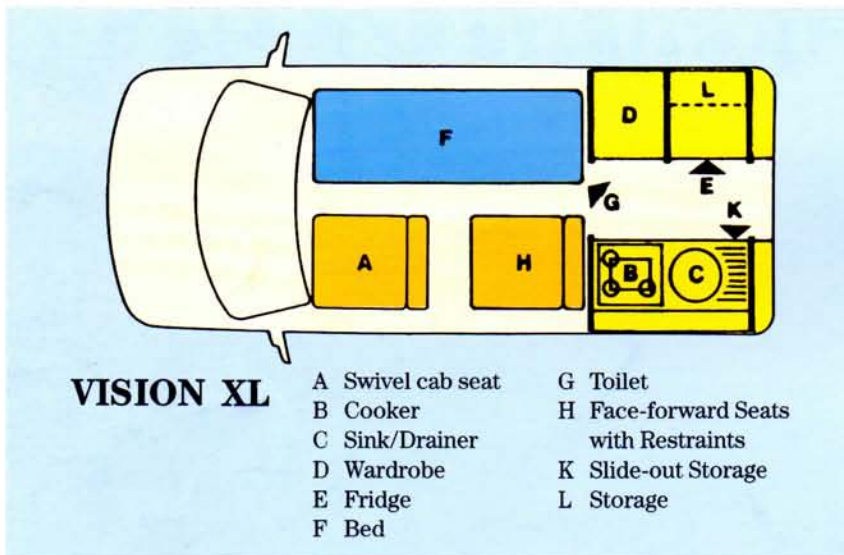
Villa and Vision Hightops

Length: 4.66m (15'3½")
 Width (inc. mirrors): 2.16m (7'1")
 Height: 2.52m (8'3½")

Villa Elevating Roof

Length: 4.66m (15'3")
 Width (inc. mirrors): 2.16m (7'1")
 Height: 2.22m (7'3")

	Petrol Cat.	Petrol Cat.	Umwelt Turbo Diesel	Diesel
Type	Volkswagen. Front mounted, transverse water cooled 4 cylinder, in-line	Volkswagen. Front mounted, transverse water cooled 5 cylinder, in-line	Volkswagen. Front mounted, transverse water cooled 4 cylinder, in-line	Volkswagen. Front mounted, transverse water cooled 5 cylinder, in-line
Capacity cc	1968	2459	1896	2370
Max. power @ rpm	62KW (84bhp) @ 4300	81KW (110bhp) @ 4500	50KW (68bhp) @ 3700	57KW (78bhp) @ 3700
Max. torque @ rpm	159Nm @ 2200	190Nm @ 2200	140Nm @ 2000–3000	164Nm @ 1800–2200
Bore and stroke	81.0 × 95.5mm	81.0 × 95.5mm	79.5 × 95.5mm	79.5 × 95.5mm
Compression ratio	8.5:1	8.5:1	22.5:1	22.5:1
Fuel system	Electronically controlled fuel injection. Emission control via 3 way catalytic converter – unleaded petrol only.	Electronically controlled fuel injection. Emission control via 3 way catalytic converter – unleaded petrol only.	Indirect injection diesel with swirl chambers distributor type fuel injection pump and diesel catalytic converter.	Indirect injection diesel with swirl chambers.
Fuel tank capacity	80 litres	80 litres	80 litres	80 litres



VISION XL

- A Swivel cab seat
- B Cooker
- C Sink/Drainer
- D Wardrobe
- E Fridge
- F Bed
- G Toilet
- H Face-forward Seats with Restraints
- K Slide-out Storage
- L Storage

Service

- Lubrication service every 5,000 miles (Diesel).
- Lubrication service every 10,000 miles (Petrol).
- Major service every 20,000 miles (or annual inspection).

Warranty

- 12 months, unlimited mileage (mechanical and paintwork).
- Additional 12 or 24 month warranty optional.
- 6 year anti-perforation.
- 3 year paintwork.

Steering

- Maintenance free rack and pinion steering.
- Collapsible steering column.
- Power assisted steering standard on all models.

Brakes

- Dual circuit hydraulic split front/rear with servo assistance.
- Front disc brakes.
- Rear drum brakes.

Mechanical

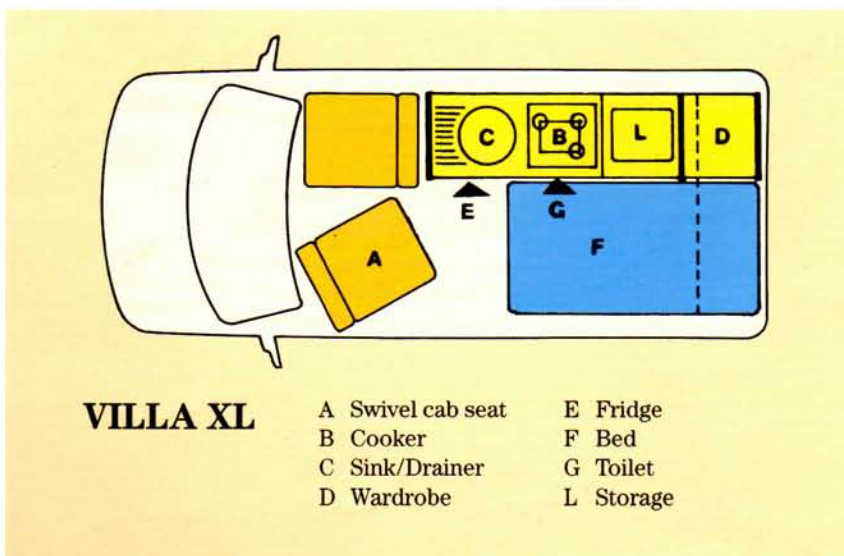
- Suspension and Running gear
- Independent front suspension with torsion bars, upper and lower wishbones.
 - Independent rear suspension with mini coil springs, semi trailing arms.
 - Telescopic, double acting shock absorbers.
 - 15" wheels and tyres.

Design registered and patented

The policy of Richard Holdsworth Conversions Ltd. and Volkswagen is one of continuous improvement. The right to change prices, specifications or equipment at any time without notice is reserved. In addition, all descriptions, data and information given in this brochure is subject to production variations. All dimensions and other technical information are approximate only and may vary according to model.

Vehicles and conversions featured in this brochure may be fitted with optional extras available at extra cost. Please see your dealer for the full list of optional extras.

This brochure supercedes and replaces all previous brochures.



VILLA XL

- A Swivel cab seat
- B Cooker
- C Sink/Drainer
- D Wardrobe
- E Fridge
- F Bed
- G Toilet
- L Storage



Richard Holdsworth Conversions Ltd.
 Headley Road East, Woodley, Reading, Berks. England RG5 4NE
 Tel: (0734) 692900 Fax: (0734) 442138

www.vwT4camper.info - a useful website for owners and enthusiasts of VW T4 Transporter Campervans



January 1994

Locations by kind permission
 of Reading Blue Coat School.